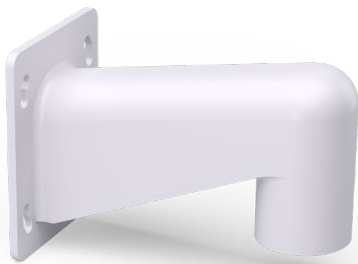




# MOUNTING ARM

ACC-MNT-ARM-B | ACC-MNT-ARM-W



## AVA CORNER BRACKET

Use the mounting arm together with the ACC-PEN-CAP. The installation will suspend the camera out from the wall and orient the camera horizontally. ACC-PEN-CAP features a drip edge which will prevent rain from disturbing the image in an outdoor installation. The horizontal camera orientation also helps shield against the sun.

## SPECIFICATIONS

<b>Thread:</b>	Female 1.5" NPT
<b>Material:</b>	Aluminum alloy
<b>Dimensions:</b>	186x104x129mm [7.3x5.1x4.1"]
<b>Surface treatment:</b>	Powder coat
<b>Color:</b>	White (ACC-MNT-ARM-W), Black (ACC-MNT-ARM-B)
<b>Weight:</b>	750g
<b>Box dimensions:</b>	220x130x150mm
<b>Box weight:</b>	874g
<b>Compatible with:</b>	Pendant cap, Corner bracket, Pole bracket

# Technical drawings

